

SEE PAGE 3

SEE PAGE 2



SEE PAGE 4

TO BE PLACED
ON SHOULDER

TO BE PLACED
ON SHOULDER

TO BE PLACED
ON SHOULDER

LEGEND

-  = WORK AREA
-  = VARIABLE MESSAGE BOARD

TEMPORARY SIGN SUPPORT NOTES:

1. All signs shall be post mounted when work operations exceed one day except for:
 - a. Road closure signs mounted in accordance with the vendor drawing for the Type III Barricade shown on the APL.
 - b. Pedestrian advanced warning or pedestrian regulatory signs mounted on sign supports in accordance with the vendor drawing shown on the APL.
 - c. Median barrier mounted signs per Index 700-013.

TEMPORARY TRAFFIC CONTROL SHALL COMPLY WITH THE CURRENT EDITION OF THE FDOT DESIGN STANDARDS (102-600 SERIES INDEX NUMBERS) AND MANUAL ON UNIFORM TRAFFIC CONTROL DEVICES (MUTCD).

MOT provided by:
Bob's BARRICADES, INC.
COMPLETE WORKSITE TRAFFIC CONTROL

**PLAN NOT
TO SCALE**

FDOT This Certifies that
Cameron J. Berger

Has Completed a Florida Department of Transportation Approved Temporary Traffic Control (TTC) Advanced (Refresher) Course.

Date Expires: 09/07/2021 Certificate # 32224
Instructor: Ronald C. Appel FDOT Provider # 134

A&W Consultants, Inc.
Phone: 386-788-9899
55 Inlet Harbor Rd. Ste.121
Port Orange,
www.FloridaMOT.com
nicolle@aswconsultants.com





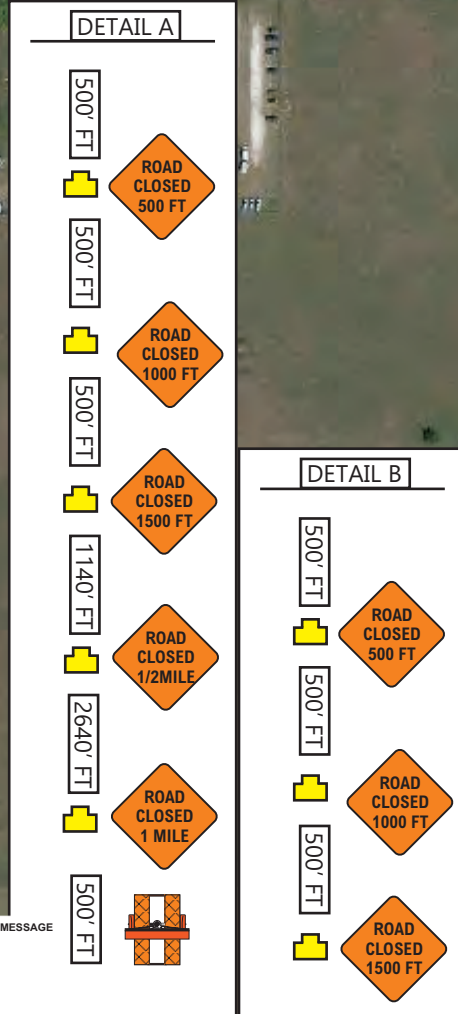
TO DISPLAY THE FOLLOWING MESSAGE DURING ROAD CLOSURE:
 PANEL 1
 CR 472
 CLOSED
 AT R.R.

TO DISPLAY THE FOLLOWING MESSAGE 7 DAYS PRIOR TO WORK COMMENCEMENT:
 PANEL 1 ROAD CLOSED AT R.R.
 PANEL 2 MM/DD/YY THRU MM/DD/YY

TO DISPLAY THE FOLLOWING MESSAGE 7 DAYS PRIOR TO WORK COMMENCEMENT:
 PANEL 1 ROAD CLOSED AT R.R.
 PANEL 2 MM/DD/YY THRU MM/DD/YY

TO DISPLAY THE FOLLOWING MESSAGE DURING ROAD CLOSURE:
 PANEL 1 CR 472 CLOSED AT R.R.
 PANEL 2 FOLLOW DETOUR

TO DISPLAY THE FOLLOWING MESSAGE DURING ROAD CLOSURE:
 PANEL 1
 ROAD CLOSED AT R.R.



LEGEND

= WORK AREA

= VARIABLE MESSAGE BOARD

TEMPORARY TRAFFIC CONTROL SHALL COMPLY WITH THE CURRENT EDITION OF THE FDOT DESIGN STANDARDS (102-600 SERIES INDEX NUMBERS) AND MANUAL ON UNIFORM TRAFFIC CONTROL DEVICES (MUTCD).

TEMPORARY SIGN SUPPORT NOTES:

1. All signs shall be post mounted when work operations exceed one day except for:

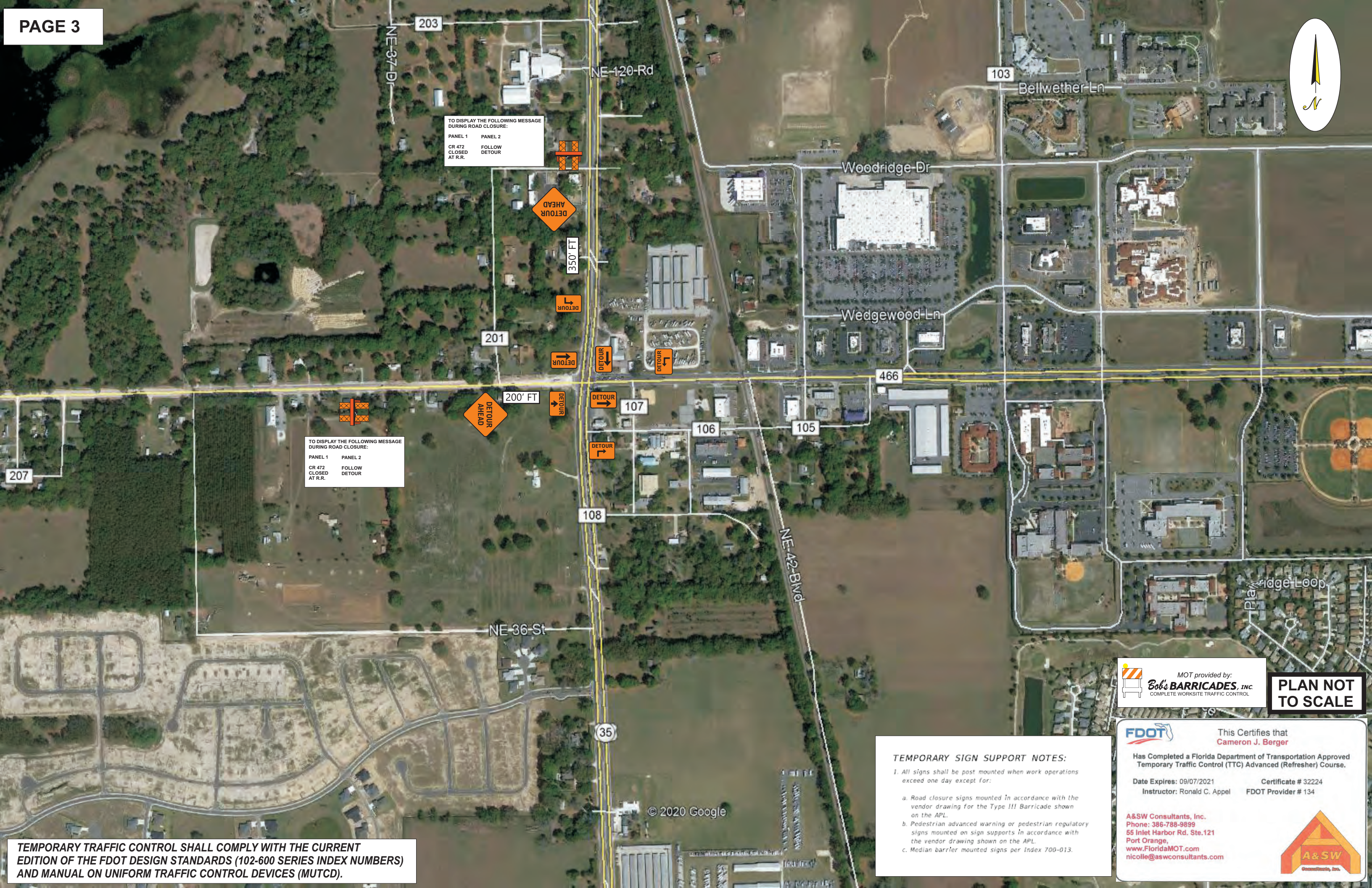
- a. Road closure signs mounted in accordance with the vendor drawing for the Type III Barricade shown on the APL.
- b. Pedestrian advanced warning or pedestrian regulatory signs mounted on sign supports in accordance with the vendor drawing shown on the APL.
- c. Median barrier mounted signs per Index 700-013.

MOT provided by:
Bob's BARRICADES, INC.
 COMPLETE WORKSITE TRAFFIC CONTROL

PLAN NOT TO SCALE

FDOT This Certifies that
Cameron J. Berger
 Has Completed a Florida Department of Transportation Approved Temporary Traffic Control (TTC) Advanced (Refresher) Course.
 Date Expires: 09/07/2021 Certificate # 32224
 Instructor: Ronald C. Appel FDOT Provider # 134

A&SW Consultants, Inc.
 Phone: 386-788-9899
 55 Inlet Harbor Rd. Ste.121
 Port Orange,
 www.FloridaMOT.com
 nicolle@aswconsultants.com



TO DISPLAY THE FOLLOWING MESSAGE DURING ROAD CLOSURE:

PANEL 1	PANEL 2
CR 472 CLOSED AT R.R.	FOLLOW DETOUR AT R.R.

TO DISPLAY THE FOLLOWING MESSAGE DURING ROAD CLOSURE:

PANEL 1	PANEL 2
CR 472 CLOSED AT R.R.	FOLLOW DETOUR

MOT provided by:
Bob's BARRICADES, INC.
 COMPLETE WORKSITE TRAFFIC CONTROL

PLAN NOT TO SCALE

FDOT This Certifies that
Cameron J. Berger
 Has Completed a Florida Department of Transportation Approved Temporary Traffic Control (TTC) Advanced (Refresher) Course.
 Date Expires: 09/07/2021 Certificate # 32224
 Instructor: Ronald C. Appel FDOT Provider # 134

TEMPORARY SIGN SUPPORT NOTES:

1. All signs shall be post mounted when work operations exceed one day except for:
 - a. Road closure signs mounted in accordance with the vendor drawing for the Type III Barricade shown on the APL.
 - b. Pedestrian advanced warning or pedestrian regulatory signs mounted on sign supports in accordance with the vendor drawing shown on the APL.
 - c. Median barrier mounted signs per Index 700-013.

A&W Consultants, Inc.
 Phone: 386-788-9899
 55 Inlet Harbor Rd., Ste.121
 Port Orange,
 www.FloridaMOT.com
 nicolle@aswconsultants.com



TEMPORARY TRAFFIC CONTROL SHALL COMPLY WITH THE CURRENT EDITION OF THE FDOT DESIGN STANDARDS (102-600 SERIES INDEX NUMBERS) AND MANUAL ON UNIFORM TRAFFIC CONTROL DEVICES (MUTCD).



TO DISPLAY THE FOLLOWING MESSAGE DURING ROAD CLOSURE:
PANEL 1
CR 472
CLOSED
AT R.R.

DETOUR
ROAD CLOSED
AHEAD
2 MILES

TO DISPLAY THE FOLLOWING MESSAGE DURING ROAD CLOSURE:
PANEL 1
CR 472
CLOSED
AT R.R.
PANEL 2
FOLLOW
DETOUR

TEMPORARY SIGN SUPPORT NOTES:
1. All signs shall be post mounted when work operations exceed one day except for:
a. Road closure signs mounted in accordance with the vendor drawing for the Type III Barricade shown on the APL.
b. Pedestrian advanced warning or pedestrian regulatory signs mounted on sign supports in accordance with the vendor drawing shown on the APL.
c. Median barrier mounted signs per Index 700-013.

MOT provided by:
Bob's BARRICADES, INC.
COMPLETE WORKSITE TRAFFIC CONTROL

PLAN NOT TO SCALE

FDOT This Certifies that
Cameron J. Berger
Has Completed a Florida Department of Transportation Approved Temporary Traffic Control (TTC) Advanced (Refresher) Course.
Date Expires: 09/07/2021 Certificate # 32224
Instructor: Ronald C. Appel FDOT Provider # 134

A&SW Consultants, Inc.
Phone: 386-788-9899
65 Inlet Harbor Rd. Ste.121
Port Orange,
www.FloridaMOT.com
nicolle@aswconsultants.com



TEMPORARY TRAFFIC CONTROL SHALL COMPLY WITH THE CURRENT EDITION OF THE FDOT DESIGN STANDARDS (102-600 SERIES INDEX NUMBERS) AND MANUAL ON UNIFORM TRAFFIC CONTROL DEVICES (MUTCD).

© 2020 Google